

CERTIFICADO DE CARACTERIZACIÓN / CHARACTERIZATION CERTIFICATE

INNOVATECIS CIA LTDA

General José María Guerrero N69-170 y Alfonso del Hierro

Quito, Ecuador

(+593) 02 6040 607

innovatec@innovatec.com.ec

Certificado No. (Certificate #): 65354

Fecha de Recepción (Reception Date): 2026-01-22

Fecha de Caracterización (Characterization Date): 2026-01-22

Próxima Fecha de Caracterización (Characterization Due):

Fecha de Emisión (Emission Date): 2026-01-26

Cliente (Client): JAMES BROWN PHARMA C.A.
AVENIDA INTEROCEÁNICA KM 23 1/2 Y PASAJE COSTA SAMBRONE

Información del Instrumento (Instrument Information)

Equipo (Instrument):	Estufa al Vacío	Int. de Medición:	(50 / 60 / 80 / 105 / 121 / 135) °C	Ubicación:	*****
Marca (Brand):	BIOBASE			(Location):	
Modelo (Model):	BOV-90VL	División de escala:	0.1 °C	Lugar de Calibración:	In Situ
Serie (Serial #):	5261705	(Resolution)		(Place of Calibration):	On Site
Código (Code #):	JBP-ETU-012				

Datos de Calibración (Calibration Info)

Procedimiento (Procedure): INN-PC-29

Condiciones Ambientales (Environmental Conditions)

Temp. Inicial (Initial Temp.): 23.4 °C

Hum. Inicial (Initial Hum.): 51.6 %HR

Temp. Final (Final Temp.): 23.6 °C

Hum. Final (Final Hum.): 49.3 %HR

Trazabilidad (Traceability Info)

Patrón (Standard)	Marca (Brand)	Cert. #	Última Calibración (Last Cal.)	Período (Period)
Termocupla	-	65252 / 65251 / 65282 / 65257	2026-01-19	1 año
Termocupla	-	65254 / 65155 / 65256 / 65253	2026-01-19	1 año
Termocupla	-	56683 / 56682 / 56685 / 56730	2025-05-14	1 año
-	-	-	-	-
-	-	-	-	-
-	-	-	-	-

Resultados (Results)

Ver Resultados en Hoja Adjunta

See results in attached Sheet

El presente Certificado de Calibración posee la trazabilidad en esta magnitud hacia el Patrón Nacional, a través de la realización de la unidad de medida en el NPL, NIST, u otro Laboratorio Nacional reconocido al Sistema Internacional de Medidas. La calibración fue realizada bajo un Sistema de Gestión de Laboratorio conforme a la Norma ISO/IEC 17025:2017. Los resultados y su incertidumbre reportada con un nivel de confianza de $k=2$, 95% son relacionados a este instrumento y en el tiempo que se realizó las medidas. Este Laboratorio no se responsabiliza de los perjuicios que pueda ocasionar el uso inadecuado del instrumento calibrado. La reproducción parcial es prohibida, la reproducción total deberá hacerse con la autorización escrita aprobada por INNOVATEC Industrial Solutions. *This Certificate of Calibration provides traceability of measurement to the National Standard, through units of measurement realized at the NPL, NIST or other recognized National Standard Laboratories to the International System of Units. The calibration was performed under a Laboratory Management System in accordance with the ISO/IEC 17025:2017 Standard. The results and the reported uncertainty at a confidence level of $k=2$, 95% are related only to this instrument and at the time of measurement. This Laboratory is not responsible for any damages that may result from improper use of the calibrated instrument. Partial reproduction is forbidden, the total reproduction must have an approved written authorization by INNOVATEC Industrial Solutions.*

Comentarios: Los resultados son un promedio de los datos tomados durante la caracterización.

Comments

Caracterizado por:
Characterized by: Ing. Patricio Llerena

Aprobado por:
Approved by:

Fin de Certificado (End of Certificate)

Certificado No.: 65354
Fecha de Calibración: 2026-01-22

Equipo (Instrument): Estufa al Vacío
Marca (Brand): BIOBASE

Nominal (Nominal)	Patrón (Standard)	UBP (UUT)	Error (Error)	Precisión (Accuracy)	Estabilidad (Stability)	Uniformidad (Uniformity)	Incertidumbre (Uncertainty)
50 °C	50.200 °C	50.0 °C	-0.177 °C	± 2.0 °C	1.760 °C	1.368 °C	± 1.3 °C
60 °C	59.729 °C	60.0 °C	0.286 °C	± 2.0 °C	1.311 °C	1.310 °C	± 2.1 °C
80 °C	79.821 °C	80.1 °C	0.241 °C	± 2.0 °C	2.119 °C	1.843 °C	± 3.2 °C
105 °C	104.652 °C	105.0 °C	0.353 °C	± 2.0 °C	2.108 °C	2.253 °C	± 3.6 °C
121 °C	120.488 °C	120.9 °C	0.455 °C	± 2.0 °C	2.382 °C	2.055 °C	± 3.6 °C
135 °C	134.179 °C	135.0 °C	0.821 °C	± 2.0 °C	1.986 °C	1.816 °C	± 3.1 °C

Diagram de Posición de Sensores (Sensor Position Diagram)



Leyenda:

- 1: Sensor #1
- 2: Sensor #2
- 3: Sensor #3
- 4: Sensor #4
- 5: Sensor #5
- 6: Sensor #6
- 7: Sensor #7
- 8: Sensor #8
- 9: Sensor #9
- 10: Sensor #10
- 11: Sensor #11
- 12: Sensor #12



Las imágenes utilizadas solo son un ejemplo de los puntos de medida empleados y posición de los sensores.

Certificado No.: 65354

Equipo (Instrument): Estufa al Vacío

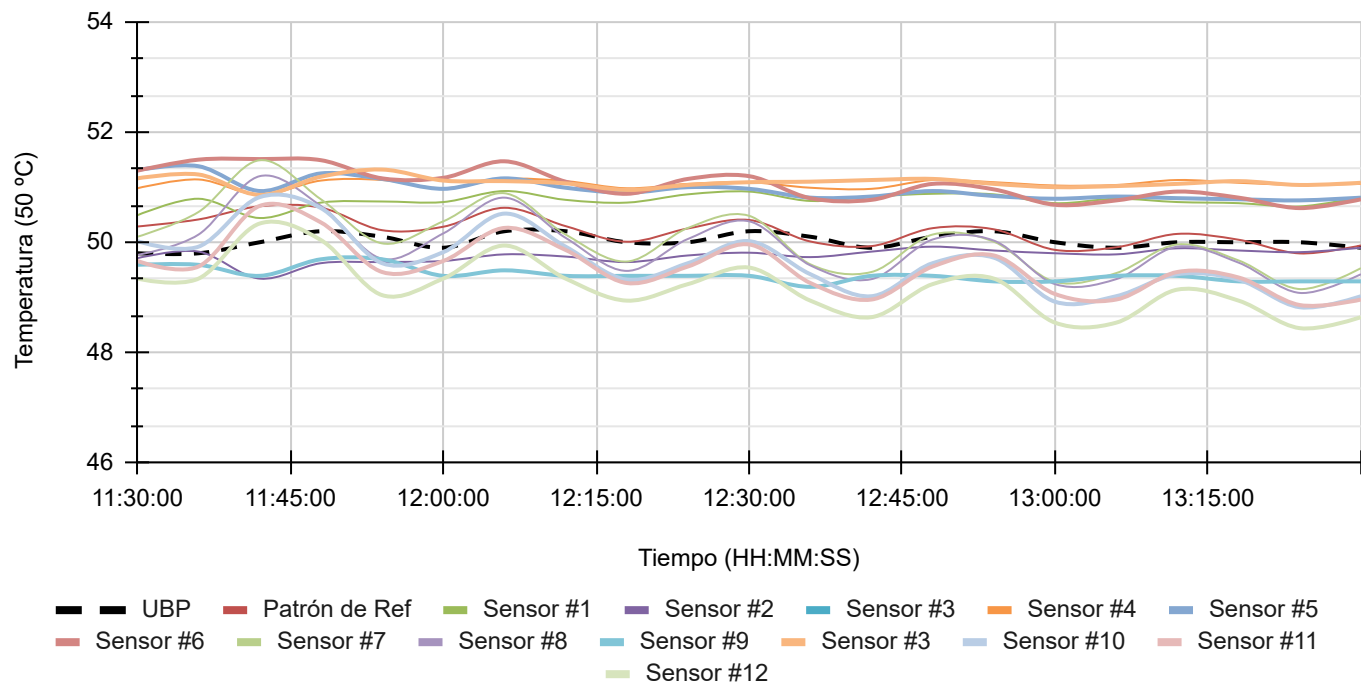
Fecha de Calibración: 2026-01-22

Marca (Brand): BIOBASE

Hora (Time)	UBP (UUT)	Patrón de Ref (Ref. Standard)	Sensor #1 (Sensor #1)	Sensor #2 (Sensor #2)	Sensor #3 (Sensor #3)	Sensor #4 (Sensor #4)	Sensor #5 (Sensor #5)	Sensor #6 (Sensor #6)	Sensor #7 (Sensor #7)	Sensor #8 (Sensor #8)	Sensor #9 (Sensor #8)	Sensor #10 (Sensor #10)	Sensor #11 (Sensor #11)	Sensor #12 (Sensor #12)	Error (Error)
11:30:00	49.8 °C	50.286 °C	50.49 °C	49.71 °C	51.16 °C	50.98 °C	51.31 °C	51.30 °C	50.10 °C	49.77 °C	49.59 °C	50.02 °C	49.66 °C	49.34 °C	-0.486 °C
11:36:00	49.8 °C	50.414 °C	50.79 °C	49.83 °C	51.23 °C	51.14 °C	51.38 °C	51.50 °C	50.55 °C	50.14 °C	49.59 °C	49.92 °C	49.56 °C	49.34 °C	-0.614 °C
11:42:00	50.0 °C	50.653 °C	50.44 °C	49.34 °C	50.86 °C	50.86 °C	50.93 °C	51.51 °C	51.49 °C	51.20 °C	49.39 °C	50.82 °C	50.66 °C	50.34 °C	-0.653 °C
11:48:00	50.2 °C	50.628 °C	50.72 °C	49.62 °C	51.19 °C	51.12 °C	51.25 °C	51.49 °C	50.78 °C	50.66 °C	49.69 °C	50.62 °C	50.36 °C	50.04 °C	-0.428 °C
11:54:00	50.1 °C	50.219 °C	50.74 °C	49.64 °C	51.32 °C	51.13 °C	51.15 °C	51.16 °C	49.98 °C	49.70 °C	49.69 °C	49.62 °C	49.46 °C	49.04 °C	-0.119 °C
12:00:00	49.9 °C	50.282 °C	50.73 °C	49.66 °C	51.12 °C	50.98 °C	50.97 °C	51.17 °C	50.38 °C	50.16 °C	49.39 °C	49.82 °C	49.66 °C	49.34 °C	-0.382 °C
12:06:00	50.2 °C	50.626 °C	50.93 °C	49.78 °C	51.11 °C	51.15 °C	51.16 °C	51.47 °C	50.89 °C	50.81 °C	49.49 °C	50.52 °C	50.26 °C	49.94 °C	-0.426 °C
12:12:00	50.2 °C	50.293 °C	50.77 °C	49.74 °C	51.07 °C	51.11 °C	50.99 °C	51.10 °C	50.14 °C	50.08 °C	49.39 °C	49.92 °C	49.86 °C	49.34 °C	-0.092 °C
12:18:00	50.0 °C	50.009 °C	50.72 °C	49.64 °C	50.95 °C	50.98 °C	50.90 °C	50.88 °C	49.65 °C	49.48 °C	49.39 °C	49.32 °C	49.26 °C	48.94 °C	-0.009 °C
12:24:00	50.0 °C	50.251 °C	50.87 °C	49.76 °C	51.04 °C	51.06 °C	51.00 °C	51.15 °C	50.26 °C	50.06 °C	49.39 °C	49.62 °C	49.56 °C	49.24 °C	-0.251 °C
12:30:00	50.2 °C	50.404 °C	50.92 °C	49.81 °C	51.09 °C	51.09 °C	50.97 °C	51.20 °C	50.48 °C	50.38 °C	49.39 °C	50.02 °C	49.96 °C	49.54 °C	-0.204 °C
12:36:00	50.1 °C	50.014 °C	50.75 °C	49.73 °C	51.10 °C	50.99 °C	50.81 °C	50.80 °C	49.60 °C	49.58 °C	49.19 °C	49.42 °C	49.26 °C	48.94 °C	0.086 °C
12:42:00	49.9 °C	49.930 °C	50.83 °C	49.83 °C	51.13 °C	50.97 °C	50.83 °C	50.77 °C	49.46 °C	49.33 °C	49.39 °C	49.02 °C	48.96 °C	48.64 °C	-0.030 °C
12:48:00	50.1 °C	50.256 °C	50.88 °C	49.92 °C	51.15 °C	51.13 °C	50.93 °C	51.06 °C	50.14 °C	50.05 °C	49.39 °C	49.62 °C	49.56 °C	49.24 °C	-0.156 °C
12:54:00	50.2 °C	50.235 °C	50.87 °C	49.85 °C	51.06 °C	51.09 °C	50.84 °C	50.96 °C	50.01 °C	50.03 °C	49.29 °C	49.72 °C	49.76 °C	49.34 °C	-0.035 °C
13:00:00	50.0 °C	49.862 °C	50.71 °C	49.80 °C	51.00 °C	51.03 °C	50.79 °C	50.68 °C	49.28 °C	49.24 °C	49.29 °C	48.92 °C	49.06 °C	48.54 °C	0.138 °C
13:06:00	49.9 °C	49.908 °C	50.79 °C	49.78 °C	51.02 °C	51.04 °C	50.83 °C	50.76 °C	49.44 °C	49.33 °C	49.39 °C	49.02 °C	48.96 °C	48.54 °C	-0.008 °C
13:12:00	50.0 °C	50.152 °C	50.73 °C	49.89 °C	51.06 °C	51.13 °C	50.80 °C	50.92 °C	49.96 °C	49.92 °C	49.39 °C	49.42 °C	49.46 °C	49.14 °C	-0.152 °C
13:18:00	50.0 °C	50.046 °C	50.71 °C	49.85 °C	51.11 °C	51.08 °C	50.78 °C	50.81 °C	49.67 °C	49.63 °C	49.29 °C	49.32 °C	49.36 °C	48.94 °C	-0.046 °C
13:24:00	50.0 °C	49.798 °C	50.65 °C	49.82 °C	51.04 °C	51.04 °C	50.76 °C	50.62 °C	49.15 °C	49.08 °C	49.29 °C	48.82 °C	48.86 °C	48.44 °C	0.203 °C
13:30:00	49.9 °C	49.943 °C	50.82 °C	49.90 °C	51.08 °C	51.06 °C	50.81 °C	50.78 °C	49.53 °C	49.42 °C	49.29 °C	49.02 °C	48.96 °C	48.64 °C	-0.043 °C

Graficos (Graphs):

Caracterización de Temperatura en 50 °C - Tiempo: 2 horas



Certificado No.: 65354

Equipo (Instrument): Estufa al Vacío

Fecha de Calibración 2026-01-22

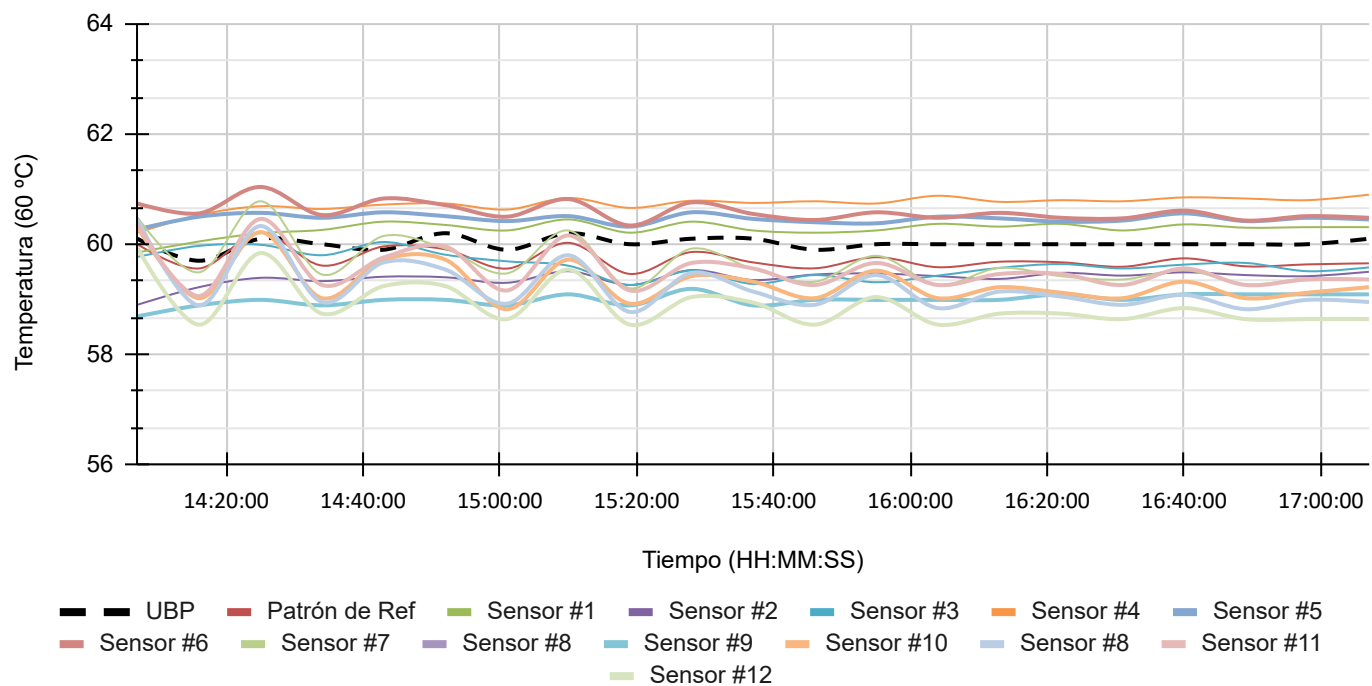
Marca (Brand): BIOBASE

Hora (Time)	UBP (UUT)	Patrón de Ref (Ref. Standard)	Sensor #1 (Sensor #1)	Sensor #2 (Sensor #2)	Sensor #3 (Sensor #3)	Sensor #4 (Sensor #4)	Sensor #5 (Sensor #5)	Sensor #6 (Sensor #6)	Sensor #7 (Sensor #7)	Sensor #8 (Sensor #8)	Sensor #9 (Sensor #9)	Sensor #10 (Sensor #10)	Sensor #11 (Sensor #11)	Sensor #12 (Sensor #12)	Error (Error)
14:07:00	60.1 °C	60.000 °C	59.85 °C	58.90 °C	59.77 °C	60.21 °C	60.27 °C	60.74 °C	60.49 °C	60.46 °C	58.69 °C	60.32 °C	60.36 °C	59.94 °C	0.100 °C
14:16:00	59.7 °C	59.560 °C	60.05 °C	59.22 °C	59.97 °C	60.53 °C	60.50 °C	60.56 °C	59.49 °C	58.89 °C	58.89 °C	59.02 °C	59.06 °C	58.54 °C	0.140 °C
14:25:00	60.1 °C	60.208 °C	60.20 °C	59.39 °C	59.99 °C	60.69 °C	60.57 °C	61.04 °C	60.78 °C	60.33 °C	58.99 °C	60.22 °C	60.46 °C	59.84 °C	-0.108 °C
14:34:00	60.0 °C	59.613 °C	60.26 °C	59.33 °C	59.80 °C	60.64 °C	60.48 °C	60.53 °C	59.45 °C	58.95 °C	58.89 °C	59.02 °C	59.26 °C	58.74 °C	0.388 °C
14:43:00	59.9 °C	59.960 °C	60.41 °C	59.41 °C	60.04 °C	60.72 °C	60.58 °C	60.83 °C	60.15 °C	59.67 °C	58.99 °C	59.72 °C	59.76 °C	59.24 °C	-0.060 °C
14:52:00	60.2 °C	59.908 °C	60.35 °C	59.40 °C	59.81 °C	60.74 °C	60.51 °C	60.71 °C	59.92 °C	59.54 °C	58.99 °C	59.72 °C	59.96 °C	59.24 °C	0.292 °C
15:01:00	59.9 °C	59.558 °C	60.25 °C	59.30 °C	59.69 °C	60.63 °C	60.42 °C	60.50 °C	59.47 °C	58.92 °C	58.89 °C	58.82 °C	59.16 °C	58.64 °C	0.342 °C
15:10:00	60.2 °C	60.025 °C	60.45 °C	59.51 °C	59.61 °C	60.84 °C	60.51 °C	60.82 °C	60.25 °C	59.80 °C	59.09 °C	59.72 °C	60.16 °C	59.54 °C	0.175 °C
15:19:00	60.0 °C	59.461 °C	60.21 °C	59.26 °C	59.26 °C	60.66 °C	60.32 °C	60.34 °C	59.20 °C	58.77 °C	58.89 °C	58.92 °C	59.16 °C	58.54 °C	0.539 °C
15:28:00	60.1 °C	59.858 °C	60.41 °C	59.53 °C	59.52 °C	60.79 °C	60.58 °C	60.76 °C	59.92 °C	59.48 °C	59.19 °C	59.42 °C	59.66 °C	59.04 °C	0.242 °C
15:37:00	60.1 °C	59.670 °C	60.25 °C	59.35 °C	59.28 °C	60.75 °C	60.46 °C	60.55 °C	59.55 °C	59.14 °C	58.89 °C	59.32 °C	59.56 °C	58.94 °C	0.430 °C
15:46:00	59.9 °C	59.563 °C	60.21 °C	59.45 °C	59.44 °C	60.78 °C	60.40 °C	60.44 °C	59.32 °C	58.90 °C	58.99 °C	59.02 °C	59.26 °C	58.54 °C	0.338 °C
15:55:00	60.0 °C	59.764 °C	60.25 °C	59.47 °C	59.31 °C	60.74 °C	60.38 °C	60.58 °C	59.79 °C	59.44 °C	58.99 °C	59.52 °C	59.66 °C	59.04 °C	0.236 °C
16:04:00	60.0 °C	59.583 °C	60.37 °C	59.42 °C	59.43 °C	60.88 °C	60.50 °C	60.48 °C	59.26 °C	58.84 °C	58.99 °C	59.02 °C	59.26 °C	58.54 °C	0.417 °C
16:13:00	60.0 °C	59.683 °C	60.32 °C	59.37 °C	59.57 °C	60.77 °C	60.47 °C	60.57 °C	59.57 °C	59.14 °C	58.99 °C	59.22 °C	59.46 °C	58.74 °C	0.317 °C
16:22:00	60.0 °C	59.672 °C	60.37 °C	59.48 °C	59.64 °C	60.80 °C	60.41 °C	60.48 °C	59.42 °C	59.05 °C	59.09 °C	59.12 °C	59.46 °C	58.74 °C	0.328 °C
16:31:00	60.0 °C	59.591 °C	60.25 °C	59.43 °C	59.56 °C	60.78 °C	60.43 °C	60.47 °C	59.36 °C	58.90 °C	58.99 °C	59.02 °C	59.26 °C	58.64 °C	0.409 °C
16:40:00	60.0 °C	59.743 °C	60.36 °C	59.49 °C	59.63 °C	60.85 °C	60.56 °C	60.61 °C	59.53 °C	59.08 °C	59.09 °C	59.32 °C	59.56 °C	58.84 °C	0.257 °C
16:49:00	60.0 °C	59.598 °C	60.30 °C	59.44 °C	59.66 °C	60.83 °C	60.42 °C	60.43 °C	59.27 °C	58.82 °C	59.09 °C	59.02 °C	59.26 °C	58.64 °C	0.402 °C
16:58:00	60.0 °C	59.634 °C	60.31 °C	59.42 °C	59.51 °C	60.80 °C	60.48 °C	60.51 °C	59.38 °C	58.99 °C	59.09 °C	59.12 °C	59.36 °C	58.64 °C	0.366 °C
17:07:00	60.1 °C	59.653 °C	60.31 °C	59.50 °C	59.58 °C	60.90 °C	60.45 °C	60.48 °C	59.36 °C	58.95 °C	59.09 °C	59.22 °C	59.36 °C	58.64 °C	0.447 °C

Graficos (Graphs):



Caracterización de Temperatura en 60 °C - Tiempo: 3 horas



Certificado No.: 65354

Equipo (Instrument): Estufa al Vacío

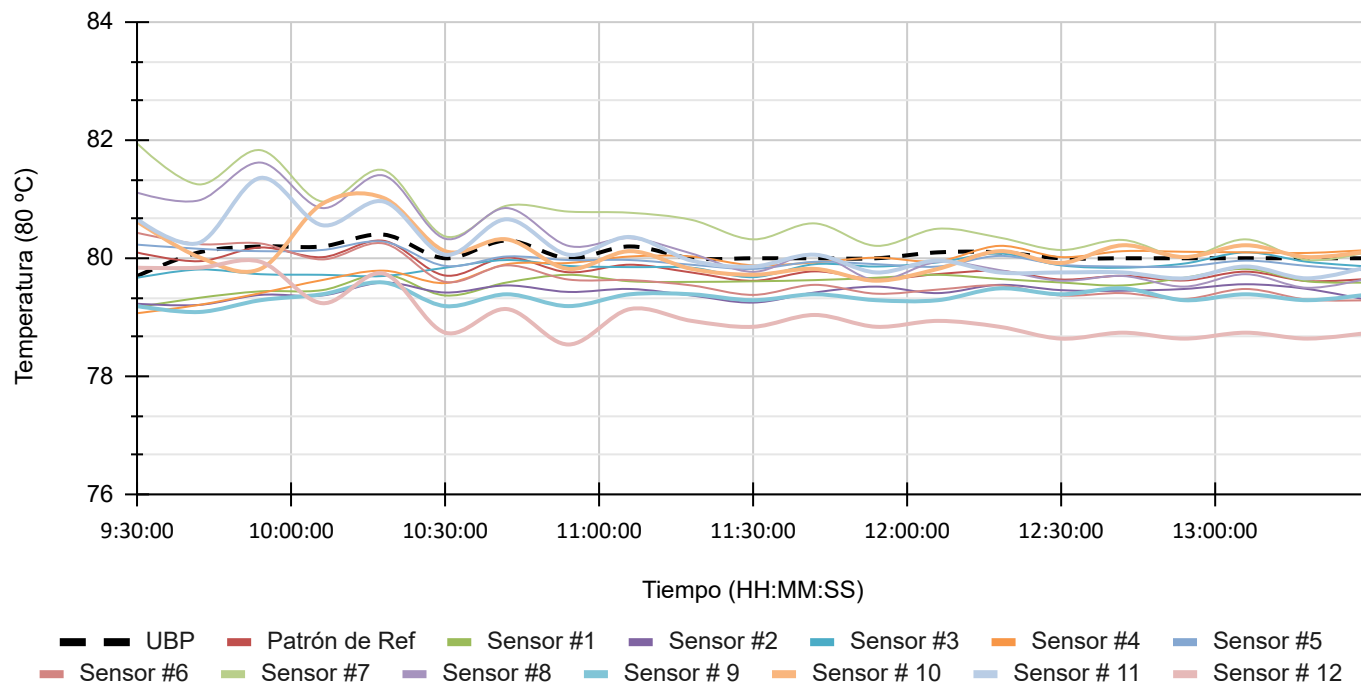
Fecha de Calibración 2026-01-22

Marca (Brand): BIOBASE

Hora (Time)	UBP (UUT)	Patrón de Ref (Ref. Standard)	Sensor #1 (Sensor #1)	Sensor #2 (Sensor #2)	Sensor #3 (Sensor #3)	Sensor #4 (Sensor #4)	Sensor #5 (Sensor #5)	Sensor #6 (Sensor #6)	Sensor #7 (Sensor #7)	Sensor #8 (Sensor #8)	Sensor #9 (Sensor #9)	Sensor #10 (Sensor #10)	Sensor #11 (Sensor #11)	Sensor #12 (Sensor #12)	Error (Error)
9:30:00	79.7 °C	80.097 °C	79.17 °C	79.23 °C	79.67 °C	79.07 °C	80.23 °C	80.43 °C	81.94 °C	81.11 °C	79.19 °C	80.62 °C	80.66 °C	79.84 °C	-0.397 °C
9:42:00	80.1 °C	79.950 °C	79.33 °C	79.21 °C	79.81 °C	79.21 °C	80.16 °C	80.24 °C	81.25 °C	80.98 °C	79.09 °C	80.02 °C	80.26 °C	79.84 °C	0.150 °C
9:54:00	80.2 °C	80.183 °C	79.44 °C	79.38 °C	79.73 °C	79.41 °C	80.12 °C	80.25 °C	81.83 °C	81.62 °C	79.29 °C	79.82 °C	81.36 °C	79.94 °C	0.017 °C
10:06:00	80.2 °C	80.018 °C	79.46 °C	79.37 °C	79.72 °C	79.63 °C	80.14 °C	79.98 °C	80.96 °C	80.85 °C	79.39 °C	80.92 °C	80.56 °C	79.24 °C	0.182 °C
10:18:00	80.4 °C	80.295 °C	79.73 °C	79.59 °C	79.7 °C	79.79 °C	80.28 °C	80.25 °C	81.49 °C	81.40 °C	79.59 °C	81.02 °C	80.96 °C	79.74 °C	0.105 °C
10:30:00	80.0 °C	79.708 °C	79.37 °C	79.42 °C	79.84 °C	79.58 °C	79.87 °C	79.60 °C	80.37 °C	80.33 °C	79.19 °C	80.12 °C	80.06 °C	78.74 °C	0.292 °C
10:42:00	80.3 °C	80.013 °C	79.59 °C	79.54 °C	79.97 °C	79.90 °C	80.03 °C	79.88 °C	80.89 °C	80.85 °C	79.39 °C	80.32 °C	80.66 °C	79.14 °C	0.287 °C
10:54:00	80.0 °C	79.763 °C	79.72 °C	79.43 °C	79.87 °C	79.92 °C	79.97 °C	79.64 °C	80.79 °C	80.21 °C	79.19 °C	79.82 °C	80.06 °C	78.54 °C	0.237 °C
11:06:00	80.2 °C	79.891 °C	79.61 °C	79.48 °C	79.85 °C	80.03 °C	79.97 °C	79.63 °C	80.77 °C	80.34 °C	79.39 °C	80.12 °C	80.36 °C	79.14 °C	0.309 °C
11:18:00	80.0 °C	79.759 °C	79.60 °C	79.37 °C	79.84 °C	80.03 °C	79.89 °C	79.54 °C	80.65 °C	80.08 °C	79.39 °C	79.82 °C	79.96 °C	78.94 °C	0.241 °C
11:30:00	80.0 °C	79.618 °C	79.61 °C	79.25 °C	79.68 °C	79.88 °C	79.82 °C	79.38 °C	80.32 °C	79.77 °C	79.29 °C	79.72 °C	79.86 °C	78.84 °C	0.382 °C
11:42:00	80.0 °C	79.778 °C	79.63 °C	79.42 °C	79.90 °C	79.93 °C	79.94 °C	79.55 °C	80.59 °C	80.07 °C	79.39 °C	79.82 °C	80.06 °C	79.04 °C	0.222 °C
11:54:00	80.0 °C	79.643 °C	79.67 °C	79.52 °C	79.86 °C	80.01 °C	79.90 °C	79.40 °C	80.21 °C	79.63 °C	79.29 °C	79.62 °C	79.76 °C	78.84 °C	0.358 °C
12:06:00	80.1 °C	79.733 °C	79.72 °C	79.41 °C	79.93 °C	79.95 °C	79.86 °C	79.47 °C	80.50 °C	79.94 °C	79.29 °C	79.82 °C	79.96 °C	78.94 °C	0.367 °C
12:18:00	80.1 °C	79.786 °C	79.65 °C	79.55 °C	80.08 °C	80.21 °C	80.04 °C	79.54 °C	80.35 °C	79.80 °C	79.49 °C	80.12 °C	79.76 °C	78.84 °C	0.314 °C
12:30:00	80.0 °C	79.640 °C	79.59 °C	79.46 °C	79.88 °C	80.02 °C	79.89 °C	79.37 °C	80.14 °C	79.62 °C	79.39 °C	79.92 °C	79.76 °C	78.64 °C	0.360 °C
12:42:00	80.0 °C	79.703 °C	79.54 °C	79.45 °C	79.84 °C	80.12 °C	79.86 °C	79.41 °C	80.31 °C	79.70 °C	79.49 °C	80.22 °C	79.76 °C	78.74 °C	0.297 °C
12:54:00	80.0 °C	79.624 °C	79.67 °C	79.48 °C	79.91 °C	80.11 °C	79.86 °C	79.31 °C	80.02 °C	79.52 °C	79.29 °C	80.02 °C	79.66 °C	78.64 °C	0.376 °C
13:06:00	80.0 °C	79.773 °C	79.82 °C	79.56 °C	80.10 °C	80.10 °C	79.96 °C	79.48 °C	80.32 °C	79.73 °C	79.39 °C	80.22 °C	79.86 °C	78.74 °C	0.227 °C
13:18:00	80.0 °C	79.614 °C	79.61 °C	79.48 °C	79.94 °C	80.09 °C	79.87 °C	79.30 °C	79.97 °C	79.50 °C	79.29 °C	80.02 °C	79.66 °C	78.64 °C	0.386 °C
13:30:00	80.0 °C	79.653 °C	79.59 °C	79.29 °C	79.86 °C	80.14 °C	79.79 °C	79.29 °C	80.11 °C	79.66 °C	79.39 °C	80.12 °C	79.86 °C	78.74 °C	0.347 °C

Graficos (Graphs):

Caracterización de Temperatura en 80 °C - Tiempo: 4 horas



Certificado No.: 65354

Equipo (Instrument): Estufa al Vacío

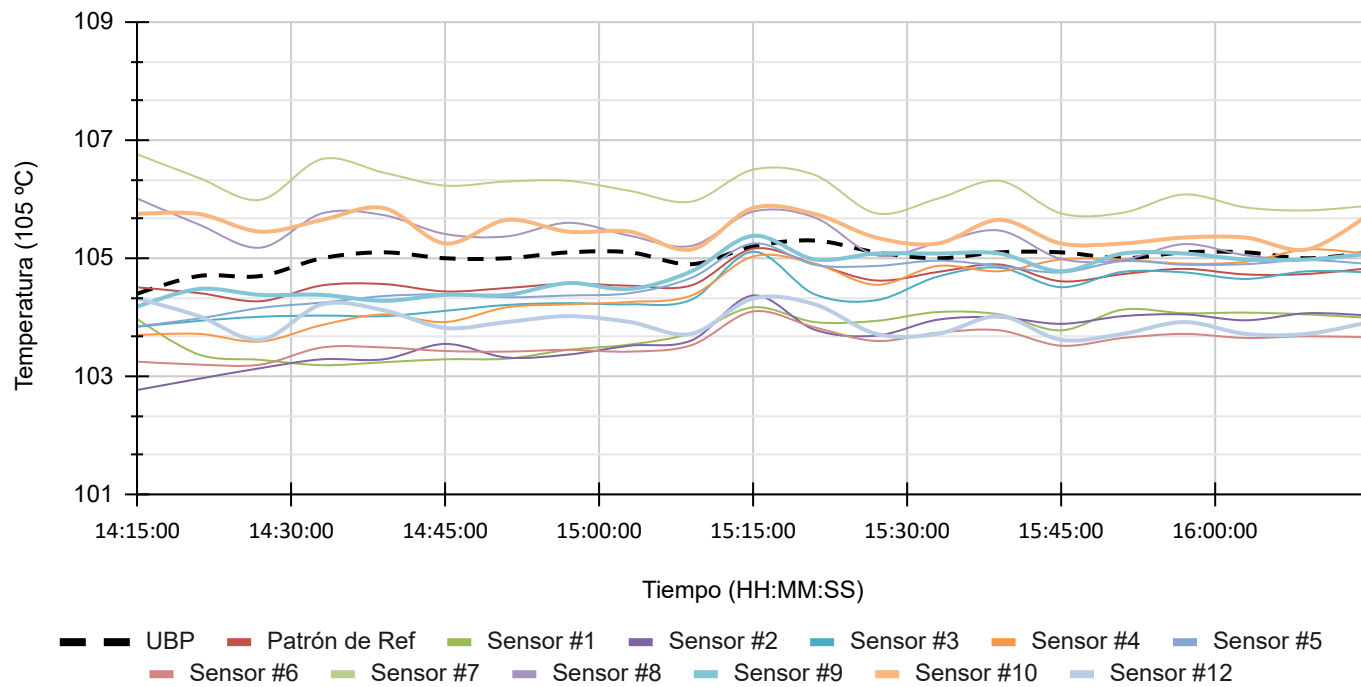
Fecha de Calibración 2026-01-22

Marca (Brand): BIOBASE

Hora (Time)	UBP (UUT)	Patrón de Ref (Ref. Standard)	Sensor #1 (Sensor #1)	Sensor #2 (Sensor #2)	Sensor #3 (Sensor #3)	Sensor #4 (Sensor #4)	Sensor #5 (Sensor #5)	Sensor #6 (Sensor #6)	Sensor #7 (Sensor #7)	Sensor #8 (Sensor #8)	Sensor #9 (Sensor #9)	Sensor #10 (Sensor #10)	Sensor #11 (Sensor #11)	Sensor #12 (Sensor #12)	Error (Error)
14:15:00	104.4 °C	104.507 °C	103.97 °C	102.77 °C	103.84 °C	103.70 °C	103.85 °C	103.25 °C	106.76 °C	106.01 °C	104.18 °C	105.75 °C	105.68 °C	104.32 °C	-0.107 °C
14:21:00	104.7 °C	104.411 °C	103.37 °C	102.96 °C	103.94 °C	103.72 °C	103.98 °C	103.20 °C	106.36 °C	105.57 °C	104.48 °C	105.75 °C	105.58 °C	104.02 °C	0.289 °C
14:27:00	104.7 °C	104.273 °C	103.28 °C	103.14 °C	104.01 °C	103.59 °C	104.16 °C	103.20 °C	105.99 °C	105.18 °C	104.38 °C	105.45 °C	105.28 °C	103.62 °C	0.427 °C
14:33:00	105.0 °C	104.541 °C	103.19 °C	103.29 °C	104.03 °C	103.87 °C	104.25 °C	103.49 °C	106.68 °C	105.76 °C	104.38 °C	105.65 °C	105.68 °C	104.22 °C	0.459 °C
14:39:00	105.1 °C	104.563 °C	103.24 °C	103.29 °C	104.02 °C	104.05 °C	104.36 °C	103.49 °C	106.45 °C	105.73 °C	104.28 °C	105.85 °C	105.88 °C	104.12 °C	0.537 °C
14:45:00	105.0 °C	104.438 °C	103.29 °C	103.55 °C	104.11 °C	103.92 °C	104.39 °C	103.43 °C	106.23 °C	105.41 °C	104.38 °C	105.25 °C	105.48 °C	103.82 °C	0.562 °C
14:51:00	105.0 °C	104.497 °C	103.30 °C	103.32 °C	104.21 °C	104.17 °C	104.34 °C	103.42 °C	106.30 °C	105.37 °C	104.38 °C	105.65 °C	105.58 °C	103.92 °C	0.503 °C
14:57:00	105.1 °C	104.570 °C	103.45 °C	103.37 °C	104.24 °C	104.22 °C	104.37 °C	103.45 °C	106.31 °C	105.60 °C	104.58 °C	105.45 °C	105.78 °C	104.02 °C	0.530 °C
15:03:00	105.1 °C	104.535 °C	103.54 °C	103.52 °C	104.22 °C	104.26 °C	104.41 °C	103.42 °C	106.14 °C	105.38 °C	104.48 °C	105.45 °C	105.68 °C	103.92 °C	0.565 °C
15:09:00	104.9 °C	104.543 °C	103.73 °C	103.61 °C	104.30 °C	104.37 °C	104.67 °C	103.53 °C	105.96 °C	105.21 °C	104.78 °C	105.15 °C	105.48 °C	103.72 °C	0.358 °C
15:15:00	105.2 °C	105.163 °C	104.17 °C	104.37 °C	105.11 °C	105.03 °C	105.25 °C	104.10 °C	106.50 °C	105.79 °C	105.38 °C	105.85 °C	106.08 °C	104.32 °C	0.038 °C
15:21:00	105.3 °C	104.905 °C	103.92 °C	103.79 °C	104.39 °C	104.91 °C	104.89 °C	103.83 °C	106.41 °C	105.69 °C	104.98 °C	105.75 °C	106.08 °C	104.22 °C	0.395 °C
15:27:00	105.1 °C	104.623 °C	103.94 °C	103.69 °C	104.29 °C	104.55 °C	104.87 °C	103.60 °C	105.76 °C	105.05 °C	105.08 °C	105.35 °C	105.58 °C	103.72 °C	0.477 °C
15:33:00	105.0 °C	104.768 °C	104.09 °C	103.96 °C	104.69 °C	104.87 °C	104.96 °C	103.74 °C	106.01 °C	105.26 °C	105.08 °C	105.25 °C	105.58 °C	103.72 °C	0.233 °C
15:39:00	105.1 °C	104.894 °C	104.05 °C	104.00 °C	104.84 °C	104.78 °C	104.87 °C	103.78 °C	106.31 °C	105.47 °C	105.08 °C	105.65 °C	105.88 °C	104.02 °C	0.206 °C
15:45:00	105.1 °C	104.610 °C	103.78 °C	103.89 °C	104.51 °C	104.98 °C	104.76 °C	103.52 °C	105.76 °C	104.99 °C	104.78 °C	105.25 °C	105.48 °C	103.62 °C	0.490 °C
15:51:00	105.0 °C	104.731 °C	104.13 °C	104.02 °C	104.77 °C	104.98 °C	104.95 °C	103.65 °C	105.77 °C	104.97 °C	105.08 °C	105.25 °C	105.48 °C	103.72 °C	0.269 °C
15:57:00	105.1 °C	104.821 °C	104.07 °C	104.05 °C	104.76 °C	104.91 °C	104.89 °C	103.72 °C	106.08 °C	105.24 °C	105.08 °C	105.35 °C	105.78 °C	103.92 °C	0.279 °C
16:03:00	105.1 °C	104.726 °C	104.08 °C	103.95 °C	104.65 °C	104.94 °C	104.90 °C	103.65 °C	105.86 °C	105.05 °C	104.98 °C	105.35 °C	105.58 °C	103.72 °C	0.374 °C
16:09:00	105.0 °C	104.734 °C	104.05 °C	104.07 °C	104.78 °C	105.15 °C	104.97 °C	103.68 °C	105.81 °C	104.97 °C	104.98 °C	105.15 °C	105.48 °C	103.72 °C	0.266 °C
16:15:00	105.1 °C	104.833 °C	103.99 °C	104.03 °C	104.76 °C	105.07 °C	104.90 °C	103.66 °C	105.89 °C	105.07 °C	105.08 °C	105.75 °C	105.88 °C	103.92 °C	0.267 °C

Graficos (Graphs):

Caracterización de Temperatura en 105 °C - Tiempo: 2 horas



Certificado No.: 65354

Equipo (Instrument): Estufa al Vacío

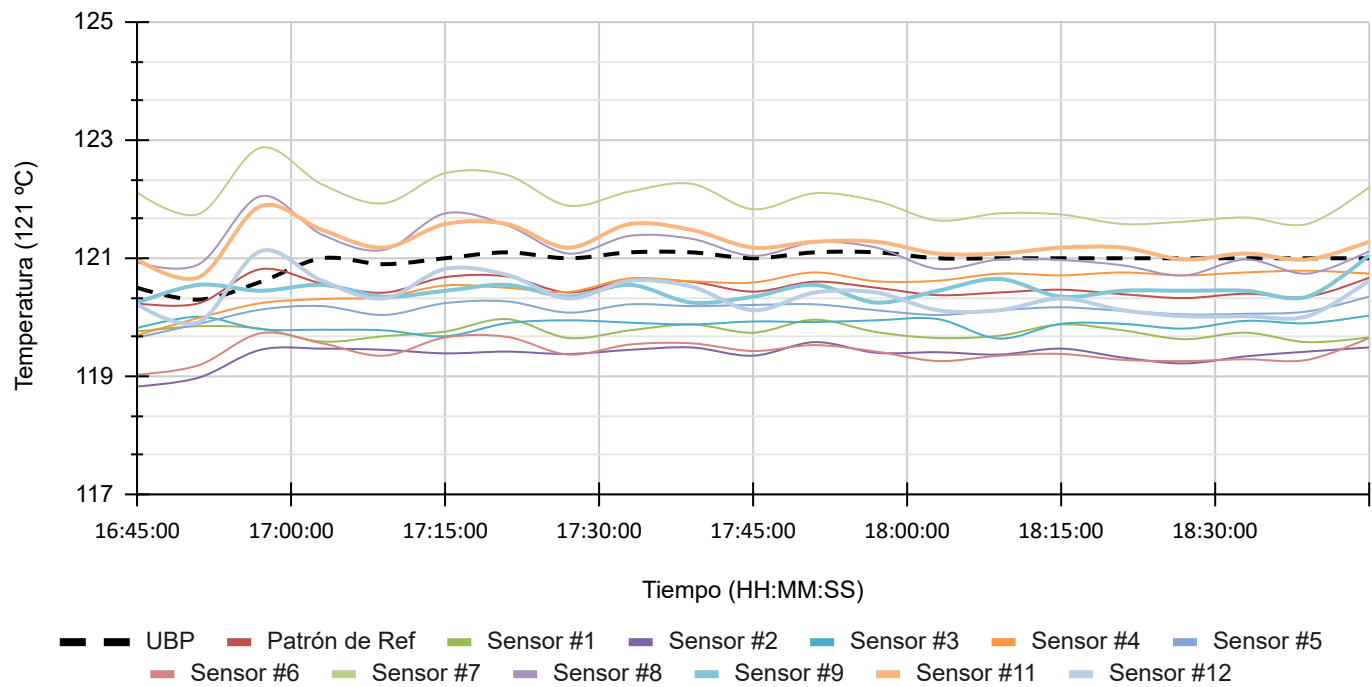
Fecha de Calibración 2026-01-22

Marca (Brand): BIOBASE

Hora (Time)	UBP (UUT)	Patrón de Ref (Ref. Standard)	Sensor #1 (Sensor #1)	Sensor #2 (Sensor #2)	Sensor #3 (Sensor #3)	Sensor #4 (Sensor #4)	Sensor #5 (Sensor #5)	Sensor #6 (Sensor #6)	Sensor #7 (Sensor #7)	Sensor #8 (Sensor #8)	Sensor #9 (Sensor #9)	Sensor #10 (Sensor #10)	Sensor #11 (Sensor #11)	Sensor #12 (Sensor #12)	Error (Error)
16:45:00	120.5 °C	120.237 °C	119.76 °C	118.83 °C	119.82 °C	119.70 °C	119.66 °C	119.03 °C	122.11 °C	120.93 °C	120.25 °C	121.55 °C	120.98 °C	120.22 °C	0.263 °C
16:51:00	120.3 °C	120.238 °C	119.85 °C	118.98 °C	120.01 °C	119.99 °C	119.89 °C	119.19 °C	121.75 °C	120.90 °C	120.55 °C	121.15 °C	120.68 °C	119.92 °C	0.062 °C
16:57:00	120.6 °C	120.815 °C	119.81 °C	119.45 °C	119.80 °C	120.24 °C	120.13 °C	119.73 °C	122.87 °C	122.05 °C	120.45 °C	122.25 °C	121.88 °C	121.12 °C	-0.215 °C
17:03:00	121.0 °C	120.572 °C	119.59 °C	119.47 °C	119.79 °C	120.31 °C	120.19 °C	119.56 °C	122.25 °C	121.40 °C	120.55 °C	121.65 °C	121.48 °C	120.62 °C	0.428 °C
17:09:00	120.9 °C	120.418 °C	119.68 °C	119.45 °C	119.78 °C	120.34 °C	120.04 °C	119.35 °C	121.93 °C	121.14 °C	120.35 °C	121.45 °C	121.18 °C	120.32 °C	0.483 °C
17:15:00	121.0 °C	120.681 °C	119.76 °C	119.39 °C	119.68 °C	120.54 °C	120.24 °C	119.66 °C	122.44 °C	121.76 °C	120.45 °C	121.85 °C	121.58 °C	120.82 °C	0.319 °C
17:21:00	121.1 °C	120.692 °C	119.97 °C	119.42 °C	119.90 °C	120.50 °C	120.27 °C	119.67 °C	122.41 °C	121.56 °C	120.55 °C	121.75 °C	121.58 °C	120.72 °C	0.408 °C
17:27:00	121.0 °C	120.419 °C	119.65 °C	119.38 °C	119.95 °C	120.43 °C	120.08 °C	119.37 °C	121.89 °C	121.08 °C	120.35 °C	121.35 °C	121.18 °C	120.32 °C	0.581 °C
17:33:00	121.1 °C	120.631 °C	119.78 °C	119.45 °C	119.91 °C	120.66 °C	120.22 °C	119.54 °C	122.13 °C	121.38 °C	120.55 °C	121.75 °C	121.58 °C	120.62 °C	0.469 °C
17:39:00	121.1 °C	120.600 °C	119.88 °C	119.49 °C	119.88 °C	120.61 °C	120.19 °C	119.56 °C	122.26 °C	121.33 °C	120.25 °C	121.75 °C	121.48 °C	120.52 °C	0.500 °C
17:45:00	121.0 °C	120.435 °C	119.74 °C	119.35 °C	119.93 °C	120.59 °C	120.21 °C	119.43 °C	121.83 °C	121.04 °C	120.35 °C	121.45 °C	121.18 °C	120.12 °C	0.565 °C
17:51:00	121.1 °C	120.603 °C	119.96 °C	119.58 °C	119.92 °C	120.76 °C	120.22 °C	119.53 °C	122.10 °C	121.27 °C	120.55 °C	121.65 °C	121.28 °C	120.42 °C	0.497 °C
17:57:00	121.1 °C	120.500 °C	119.75 °C	119.40 °C	119.95 °C	120.61 °C	120.12 °C	119.42 °C	121.97 °C	121.18 °C	120.25 °C	121.65 °C	121.28 °C	120.42 °C	0.600 °C
18:03:00	121.0 °C	120.376 °C	119.65 °C	119.41 °C	119.97 °C	120.62 °C	120.04 °C	119.26 °C	121.64 °C	120.82 °C	120.45 °C	121.45 °C	121.08 °C	120.12 °C	0.624 °C
18:09:00	121.0 °C	120.421 °C	119.69 °C	119.37 °C	119.64 °C	120.74 °C	120.12 °C	119.35 °C	121.76 °C	120.98 °C	120.65 °C	121.55 °C	121.08 °C	120.12 °C	0.579 °C
18:15:00	121.0 °C	120.468 °C	119.88 °C	119.47 °C	119.89 °C	120.71 °C	120.17 °C	119.38 °C	121.74 °C	120.97 °C	120.35 °C	121.55 °C	121.18 °C	120.32 °C	0.533 °C
18:21:00	121.0 °C	120.392 °C	119.78 °C	119.32 °C	119.89 °C	120.76 °C	120.11 °C	119.28 °C	121.58 °C	120.88 °C	120.45 °C	121.35 °C	121.18 °C	120.12 °C	0.608 °C
18:27:00	121.0 °C	120.326 °C	119.63 °C	119.22 °C	119.81 °C	120.71 °C	120.05 °C	119.26 °C	121.62 °C	120.71 °C	120.45 °C	121.45 °C	120.98 °C	120.02 °C	0.674 °C
18:33:00	121.0 °C	120.400 °C	119.74 °C	119.34 °C	119.94 °C	120.76 °C	120.06 °C	119.29 °C	121.69 °C	120.98 °C	120.45 °C	121.45 °C	121.08 °C	120.02 °C	0.600 °C
18:39:00	121.0 °C	120.349 °C	119.58 °C	119.42 °C	119.90 °C	120.79 °C	120.10 °C	119.28 °C	121.58 °C	120.74 °C	120.35 °C	121.45 °C	120.98 °C	120.02 °C	0.651 °C
18:45:00	121.0 °C	120.670 °C	119.66 °C	119.49 °C	120.03 °C	120.74 °C	120.35 °C	119.65 °C	122.20 °C	121.12 °C	121.05 °C	121.85 °C	121.28 °C	120.62 °C	0.330 °C

Graficos (Graphs):

Caracterización de Temperatura en 121 °C - Tiempo: 2 horas



Certificado No.: 65354

Equipo (Instrument): Estufa al Vacío

Fecha de Calibración 2026-01-22

Marca (Brand): BIOBASE

Hora (Time)	UBP (UUT)	Patrón de Ref (Ref. Standard)	Sensor #1 (Sensor #1)	Sensor #2 (Sensor #2)	Sensor #3 (Sensor #3)	Sensor #4 (Sensor #4)	Sensor #5 (Sensor #5)	Sensor #6 (Sensor #6)	Sensor #7 (Sensor #7)	Sensor #8 (Sensor #8)	Sensor #9 (Sensor #9)	Sensor #10 (Sensor #10)	Sensor #11 (Sensor #11)	Sensor #12 (Sensor #12)	Error (Error)
20:00:00	135 °C	134.431 °C	133.87 °C	133.05 °C	133.77 °C	134.53 °C	133.69 °C	133.33 °C	136.15 °C	135.28 °C	133.85 °C	135.75 °C	135.68 °C	134.22 °C	0.569 °C
20:30:00	135 °C	134.271 °C	133.85 °C	132.93 °C	133.49 °C	134.62 °C	133.54 °C	133.14 °C	136.00 °C	134.78 °C	134.05 °C	135.55 °C	135.38 °C	133.92 °C	0.729 °C
21:00:00	135 °C	134.201 °C	133.73 °C	132.94 °C	133.52 °C	134.78 °C	133.40 °C	133.01 °C	135.89 °C	134.74 °C	133.85 °C	135.55 °C	135.28 °C	133.72 °C	0.799 °C
21:30:00	135 °C	134.216 °C	133.91 °C	132.88 °C	133.56 °C	134.32 °C	133.45 °C	133.06 °C	135.92 °C	134.59 °C	133.95 °C	135.55 °C	135.48 °C	133.92 °C	0.784 °C
22:00:00	135 °C	134.179 °C	133.84 °C	133.08 °C	133.43 °C	134.39 °C	133.36 °C	132.95 °C	135.79 °C	134.71 °C	134.05 °C	135.35 °C	135.38 °C	133.82 °C	0.821 °C
22:30:00	135 °C	134.178 °C	134.02 °C	133.12 °C	133.66 °C	134.36 °C	133.34 °C	132.96 °C	135.84 °C	134.74 °C	133.85 °C	135.45 °C	135.18 °C	133.62 °C	0.822 °C
23:00:00	135 °C	134.170 °C	133.79 °C	132.94 °C	133.56 °C	134.47 °C	133.33 °C	132.98 °C	135.94 °C	134.63 °C	133.85 °C	135.35 °C	135.38 °C	133.82 °C	0.830 °C
23:30:00	135 °C	134.223 °C	133.88 °C	133.17 °C	133.63 °C	134.45 °C	133.47 °C	133.08 °C	135.95 °C	134.64 °C	134.05 °C	135.35 °C	135.28 °C	133.72 °C	0.778 °C
0:00:00	135 °C	134.214 °C	133.97 °C	133.05 °C	133.63 °C	134.44 °C	133.49 °C	133.06 °C	135.84 °C	134.69 °C	133.95 °C	135.45 °C	135.28 °C	133.72 °C	0.786 °C
0:30:00	135 °C	134.193 °C	134.12 °C	133.07 °C	133.78 °C	134.37 °C	133.48 °C	133.03 °C	135.78 °C	134.58 °C	133.75 °C	135.25 °C	135.28 °C	133.82 °C	0.808 °C
1:00:00	135 °C	134.198 °C	134.02 °C	133.15 °C	133.75 °C	134.49 °C	133.46 °C	133.03 °C	135.83 °C	134.64 °C	133.75 °C	135.25 °C	135.18 °C	133.82 °C	0.802 °C
1:30:00	135 °C	134.133 °C	134.10 °C	133.04 °C	133.67 °C	134.42 °C	133.38 °C	132.97 °C	135.79 °C	134.63 °C	133.75 °C	135.05 °C	135.08 °C	133.72 °C	0.867 °C
2:00:00	135 °C	134.180 °C	134.03 °C	132.98 °C	133.59 °C	134.46 °C	133.51 °C	133.08 °C	135.86 °C	134.55 °C	133.65 °C	135.35 °C	135.28 °C	133.82 °C	0.820 °C
2:30:00	135 °C	134.162 °C	133.98 °C	132.83 °C	133.65 °C	134.41 °C	133.44 °C	133.03 °C	135.86 °C	134.54 °C	133.85 °C	135.25 °C	135.28 °C	133.82 °C	0.838 °C
3:00:00	135 °C	134.249 °C	133.93 °C	133.12 °C	133.71 °C	134.43 °C	133.56 °C	133.09 °C	135.80 °C	134.75 °C	133.95 °C	135.45 °C	135.28 °C	133.92 °C	0.751 °C
3:30:00	135 °C	134.091 °C	134.04 °C	132.83 °C	133.54 °C	134.33 °C	133.40 °C	132.99 °C	135.81 °C	134.55 °C	133.75 °C	135.05 °C	135.08 °C	133.72 °C	0.909 °C
4:00:00	135 °C	134.173 °C	133.88 °C	132.92 °C	133.66 °C	134.38 °C	133.48 °C	133.04 °C	135.82 °C	134.69 °C	133.85 °C	135.35 °C	135.18 °C	133.82 °C	0.828 °C
4:30:00	135 °C	134.083 °C	133.93 °C	132.79 °C	133.62 °C	134.35 °C	133.37 °C	132.93 °C	135.70 °C	134.50 °C	133.75 °C	135.25 °C	135.08 °C	133.72 °C	0.917 °C
5:00:00	135 °C	134.094 °C	133.86 °C	132.87 °C	133.66 °C	134.36 °C	133.31 °C	132.96 °C	135.91 °C	134.70 °C	133.65 °C	135.25 °C	134.88 °C	133.72 °C	0.906 °C
5:30:00	135 °C	134.047 °C	133.82 °C	132.69 °C	133.57 °C	134.38 °C	133.36 °C	132.94 °C	135.74 °C	134.56 °C	133.75 °C	135.15 °C	134.88 °C	133.72 °C	0.953 °C
6:00:00	135 °C	134.066 °C	133.67 °C	132.61 °C	133.55 °C	134.33 °C	133.36 °C	132.93 °C	135.72 °C	134.72 °C	133.85 °C	135.25 °C	135.08 °C	133.72 °C	0.934 °C
6:30:00	135 °C	134.106 °C	133.96 °C	132.74 °C	133.46 °C	134.30 °C	133.41 °C	133.00 °C	135.84 °C	134.66 °C	133.85 °C	135.35 °C	134.98 °C	133.72 °C	0.894 °C
7:00:00	135 °C	134.033 °C	133.87 °C	132.66 °C	133.45 °C	134.33 °C	133.34 °C	132.91 °C	135.71 °C	134.73 °C	133.65 °C	135.25 °C	134.88 °C	133.62 °C	0.967 °C
7:30:00	135 °C	134.137 °C	133.82 °C	132.63 °C	133.58 °C	134.55 °C	133.43 °C	133.00 °C	135.78 °C	134.85 °C	133.95 °C	135.35 °C	134.98 °C	133.72 °C	0.863 °C
8:00:00	135 °C	134.073 °C	133.66 °C	132.60 °C	133.62 °C	134.50 °C	133.49 °C	132.96 °C	135.54 °C	134.60 °C	133.95 °C	135.25 °C	134.98 °C	133.72 °C	0.927 °C

Graficos (Graphs):

Caracterización de Temperatura en 135 °C - Tiempo: 12 horas

